

# KTI CHRONICLES

Where Students Are First™

Volume 4 Issue 11

December 2009

## Inside this issue:

<i>Student of the Month</i>	2
<i>Pacific Institute</i>	2
<i>Faculty Spotlight; Holiday Party</i>	3
<i>Caring about our Community</i>	4
<i>Free Computer Service</i>	5
<i>Honors Awarded</i>	6
<i>Ask the Computer Expert</i>	7
<i>Birthday Watch</i>	7
<i>Placement &amp; Externship Corner</i>	8
<i>Recipe of the Month</i>	8
<i>Holiday Dinner Recipes</i>	9
<i>Holiday Word Search</i>	10
<i>Calendar of Events</i>	11



2301 Academy Drive  
Harrisburg, PA 17112  
717-545-4747

[www.kti.edu](http://www.kti.edu)

## KTI Hosts Fox 43 Morning News Show

By: Chef King



Melanie handles the blow torch on the crème brûlée

I got a message to see Mr. Snyder immediately after class. *Uh-oh, what did I do wrong*, was my first thought.

"Hi, Chef, come on in." was his response to my knock on his office door. "How would you like to do a cooking show here at KTI?"

"Are you serious?" I replied.

"Yes," he said. "Fox news 43 would like to tape their morning show with Melanie Gardner in our kitchen. The theme is Thanksgiving and how to prepare a Thanksgiving Day meal."

"Sure! That sounds great! When is it?" I asked.

"The Monday before Thanksgiving," he replied.

I flew into momentary panic. I had requested the day off that day for a day trip with my father. So after a few phone calls and a quick change of scheduling, we were all set for Monday the 23rd of November.

The show format was to be four, 2½ minute segments filmed live with a different Thanksgiving theme for each. Other than that information, we were given no guidelines for the show. It was all up to us how we were to handle it.

I immediately started to think of what I could do in 2½ minutes that would have an impact on the air. So with the help of Chef Stiffler, we formulated a plan of action.



After working Sunday afternoon the day before the big event and a hurried shopping trip after class, we were all set!

Chef Kennedy was going to be my kitchen assistant while the show was airing and because the film crew was arriving at 6:45 AM, we both arrived at KTI before 6:00 AM. I was still unsure what I would say during the broadcast as we were not provided a script for the show. I just decided that I would adlib and speak about what I know best—food!

The episodes and the 2½ minutes flew by, and with a few minor glitches, we pulled it off!

A special thanks from me to Chef Stiffler and Chef Kennedy for their help. Without it, I could not have done it.



Fox 43's Melanie Gardner helps Chef King get the turkey ready



## Profile in Success: December Student of the Month

### Affirmations For Success

*I am my own unique self—special, creative, and wonderful.*

\*\*\*

*I have a clear and specific set of goals and I review them continually.*

\*\*\*

*When I believe in myself, so do others.*

\*\*\*

*Today, I will stop all criticism, forgive, relax, and be open.*

\*\*\*

*I prosper whenever I turn and I know that I deserve prosperity of all kinds.*



**December's student of the month is Carol Gibble!**

Carol was born and raised in Ohio but now lives in Middletown.

She used to have a career in dispatching but lost her job in 2008. Afterwards, she took a "dead-end" job in a factory until she figured out what she wanted to do with her life. She knew that she did not want to keep the factory job and she definitely did not want to go back to her dispatching career.

She realized that she has always been interested in the medical field. She has been in several situations where she responded to emergencies but always questioned if she provided the correct medical

treatment. After enrolling at KTI, she knows that being a Medical Assistant is something she definitely wants to do with her life.

Her goal is to complete her schooling and then start her new career with confidence.

In her spare time, she enjoys watching the Pittsburgh Steelers, the Hershey Bears, and the Colorado Rockies. Baseball was a huge part of her life growing up and she still enjoys it.

Carol feels as though the education she is receiving from KTI is phenomenal. It's fast and will make your head spin, but the teachers are more than willing to help work through any walls you may have.

**Congratulations, Carol!!**



### Submissions

- Are you creative?
- Do you have an interest in writing?
- Is there something you would like to share with the student body?

If you are interested in contributing to the January 2010 issue, please give your submissions to Kristen Cahill, Career Placement/Externship Coordinator . **Submission deadline is December 23rd!**

## Pacific Institute Unit Five: How My Mind Works

In order to motivate ourselves, we have to understand how our minds work.

Our conscious, subconscious and creative subconscious work together to perceive the world around us, store our reality and make sure that each of us acts like the person we know ourselves to be.

We have an image of how we are inside of us. We know how we are, and we

constantly balance our lives based upon our ideas of how good we are, what kind of student we are, and how smart we are.

If we feel we are performing above or below the level we think we are at, we will correct ourselves accordingly to be what our subconscious believes us to be.

We need to raise our self-images in order to reach our potential. We are always

self correcting, so the better our self images, the better our lives will be!



**"We need to raise our self-images..."**

# Faculty Spotlight: Linda Runk

Dental Instructor



Linda has been in the dental profession since 1980. She started her career as a dental assistant in a small practice in Chambersburg,

PA. It eventually led to a position as office manager.

She spent most of her career working in an office in Carlisle, PA up until the untimely death of the doctor. She feels as though she owes a great deal of credit to him for his emphasis on patient care and enormous community involvement. His values and principles impacted her approach to life as well as her professional skills.

Linda maintains a license for practicing as an Expanding Functions Dental Assistant in Pennsylvania and has been active with that part in her career since 2000.

In her spare time, she enjoys gardening and competitive horseback trail riding. She also enjoys spending time with her husband and grandson.



## Classifieds

- Have something to sell, swap or give away?
- Looking for a particular item to buy?

If you are interested in composing a classified ad for the newsletter, please give your ads to Kristen Cahill, in Career Placement.

The cost is the best part of all-it's free!

So start cleaning out your clutter and maybe make some cash in the process!

Remember-one person's trash is another person's treasure!



## KTI WATCH:



## KTI'S ANNUAL HOLIDAY PARTY

# WILL BE ON THURSDAY, DECEMBER 10th!



# Caring about Our Community

By: Emily Hsueh, Dental Assistant Specialist student

## Students without Borders: Donations for Our Troops

Support our troops. As simple as this concept is, it has a different meaning for each person. When my husband was in the military, for me this meant sending him letters and little things to remind him that I loved him. It was this idea of "giving to show we care" that the Community Service Committee started the donation for the troops overseas.

The troops receiving these donations are on the front lines overseas and need our support more than ever. We want to let them know that we appreciate the courage, commitment, and bravery they have. Every

day, they stand up for our Nation as well as for what is right. This donation is to remind the troops that we are grateful for the sacrifices they make. Fighting or fallen, they are not forgotten because they are in the thoughts and hearts of KTI students.

Due to the generous response and support from the KTI students, a wide variety of supplies has been collected. This includes reading material, snacks, hygiene products, and movies & CDs, among other things. KTI is proud to have collected so many items that the troops may not always

have readily available. We hope to boost the morale of our troops by sending these comforts from home.

The Community Service Committee wants to thank everyone for bringing in donations. A special thanks to the Dental department for collecting over 500 items, the Medical department for bringing approximately 250, and the Massage department for about 75 items.

Our appreciation is extended to all military, serving in the U.S. or overseas.

### More Food Drive Info

From: [CentralPAFoodBank.org](http://CentralPAFoodBank.org)

Each year, food donations to the Central Pennsylvania Food Bank bring in millions of pounds of items. Food drives are a great way for a community or civic organization to get involved in hunger relief.

What kind of food donations does the Food Bank need?

Non-perishable items like these are the most valuable:

- \* Canned tuna
- \* Canned meats and stews
- \* Soup
- \* Peanut butter
- \* Canned fruits
- \* Canned vegetables
- \* Packaged meals
- \* Packaged pasta
- \* Packaged rice
- \* Canned and dried beans
- \* Fruit juice
- \* Vegetable juice
- \* Baby food, cereal, and formula (must be within code date)

Please remember that the Department of Health requires that all cans have labels and that packaged goods are factory-sealed, in good condition, and without rust or severe dents.

## Food for the Holidays: Donations for Our Community

This Holiday season, one of the things people look forward to the most is sitting down with family and friends to dine on a hot home-cooked meal. Unfortunately, not everyone has the means to provide for their families in this way, so we are asking KTI students for their help! This Christmas season, the Community Service Committee is holding a food drive to collect for underprivileged people in our community.

Starting December 1st, and continuing for approximately two weeks through December 18th, we will be collecting donations. Donations can include anything that is non-perishable, such as canned items, "instant" items (such as instant mashed potatoes), and packaged cookies or Little Debbie's desserts.

All of the supplies we collect will go directly to the Central Pennsylvania Food Bank, where it will be dispersed to families in need.

Last year, as a school, we gathered 1,200 items! Because of our amazing effort and contributions of the previous year, we are going to aim to repeat it! As a challenge to the school, the Community Service Committee will be counting the collected items frequently to keep track of the total and see how close we are to 1,200 items. As a goal, let's try to be better than last year!

For as little as 78 cents for a can of vegetables from Wal-Mart, we can make a positive impact on somebody's life this Holiday season.



## \*\* FREE COMPUTER SERVICE \*\*

The A+ Team is a group of IT students who are currently taking a diagnostic, repair, and parts replacement class. In addition to learning about hardware, tweaking the operations of a computer in order to make it run more efficiently is also greatly revealed.

The name of the course is called A+, and like any class, the students are anxious to work on real-life situations in addition to the exercises they are exposed to in their textbooks. Therefore, the team is open to working on computers that the rest of the student body is welcome to bring in for service.

The service time from the teams is at no charge and is treated as a learning experience. However, if willing to act upon the recommendations of the A+ Team, the student bringing in the computer is responsible for purchasing replacement parts or buying software (computer programs) if deemed necessary.

Now, in exchange for this free service, students should be aware that the team is just learning. Accidents could happen. Therefore, students are to be aware that risks are involved and that the school, the A+ Team, the instructor, and the individual students involved in the service will not be held liable for any damage, loss of data, deactivation of a program, or any other loss of hardware or software incurred during the service.

Also, the service is a drop-off and pick-up process. There is no waiting since computers are worked on only during lab time.

So, if your computer is running slow, popping up weird messages, won't run certain programs properly, makes an interesting noise, software is out of date, or you just want to make sure it is running as efficiently as possible, the A+ Team is willing to at least provide a free diagnostics of your computer.

Students dropping off computers will be required to sign an authorization form, therefore, make sure you are the owner of the computer or have permission to sign the form. Printers and laptops will be accepted as well.

See Mr. O (Mr. O'Donnell) in room 102 between now and the middle of February to make arrangements!



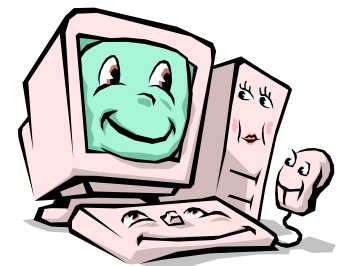
**Computer not running right?**

**Don't want to pay just for diagnostics?**

**Want to provide real life situations?**

**CONTACT THE A+ TEAM!**

See Mr. O'Donnell in room 102 for more details.



# Do you need help with your resume?

Stop by the Business Office and see Kristen! Whether you've never written a resume before or just need to polish it up, she can help!

## Some tips:

- There is no right or wrong way to construct a resume as long as it is **CONSISTENT**
- Make sure you have an equal margin on all sides of the page– like a picture frame
  - Make sure it is concise, specific, and easy to read
  - Avoid the use of pronouns such as “I,” “me,” or “my”
  - Write in the past tense, except for current jobs and activities

## JOHN D. DOE

---

2301 Academy Dr. Harrisburg, PA 17112  
 John.Doe@kti.edu  
 (717) 545-4747

### Objective

To acquire an Expanded Functions Dental Assisting position that will broaden my knowledge as well as utilize my training and skills, while allowing me to provide excellent patient care.

### Summary of Skills

- Composite and amalgam restorations
- Fabricating mouth guards, night guards, and bleaching trays
- Four-handed chair side assisting
- Matrix band and wedge placement
- Production of diagnostic casts

### Education

**Keystone Technical Institute** – Harrisburg, PA Sept. 2008-Dec. 2009  
 Associates Degree in Specialized Technology; Dental Assisting

**Externship:** 500 hours, 15 weeks  
 Dr. Roger Anderson, DMD – Camp Hill, PA Aug. 2009-Dec. 2009

**West Perry High School** – Elliptsburg, PA Sept. 2002-May 2006

### Employment

**ABC Office Supply** – Harrisburg, PA Jul. 2006-Aug.2008  
 Administrative Assistant

- Maintained files for 40 employees
- Took accurate and detailed meeting minutes every week
- Provided friendly and reliable customer service

### Certificates & Awards

- Distinguished Honors and Outstanding Attendance at Keystone Technical Institute
- Certified in CPR and First Aid
- Pennsylvania State Radiology Certification
- Expanded Functions Dental Assistant License

References Available Upon Request

# Honors Awarded

Honors were awarded to the following students for the Evening Module ending November 9, 2009:

**Cynthia Barnes**

Honors  
Outstanding Attendance

**Wanda Beckett**

Honors  
Outstanding Attendance

**Quyen Bui**

Distinguished Honors  
Perfect Attendance

**Dave Campbell**

Distinguished Honors  
Perfect Attendance

**Sherri Conn**

Distinguished Honors  
Perfect Attendance

**Jessica Cooper**

Distinguished Honors  
Outstanding Attendance

**Anna Cramer**

Honors  
Perfect Attendance

**Sarina Evans**

Distinguished Honors  
Perfect Attendance

**Christina Farley**

Distinguished Honors  
Perfect Attendance

**Katrina Feltman**

Distinguished Honors  
Outstanding Attendance

**Triease Frederick**

Distinguished Honors  
Outstanding Attendance

**Meisha Grady**

Distinguished Honors  
Outstanding Attendance

**Tiyenne Greene**

Distinguished Honors  
Outstanding Attendance

**Holly Gutshall**

Distinguished Honors  
Outstanding Attendance

**Rebecca Hegenbert**

Distinguished Honors  
Perfect Attendance

**Shannon Heimbach**

Distinguished Honors  
Outstanding Attendance

**Henry Herbert**

Honors  
Outstanding Attendance

**James Hower**

Honors  
Perfect Attendance

**Tina Hummel**

Distinguished Honors  
Outstanding Attendance

**Charles Hunter**

Honors  
Outstanding Attendance

**Medina Long**

Distinguished Honors  
Outstanding Attendance

**Jody Mecca**

Honors  
Outstanding Attendance

**Doreen McElroy**

Distinguished Honors  
Outstanding Attendance

**Debra Myers**

Distinguished Honors  
Outstanding Attendance

**Jackee Palm**

Honors  
Outstanding Attendance

**Erika Perez**

Distinguished Honors  
Perfect Attendance

**Jesse Reichert**

Distinguished Honors  
Outstanding Attendance

**Amanda Reinhardt**

Honors  
Outstanding Attendance

**Krystelle Schramm**

Distinguished Honors  
Outstanding Attendance

**Andrew Sharp**

Distinguished Honors  
Outstanding Attendance

**Samantha Smith**

Distinguished Honors  
Outstanding Attendance

**Susan Smith**

Distinguished Honors  
Outstanding Attendance

**Barbara St. Louis**

Outstanding Attendance

**Stacy Sweigart**

Distinguished Honors  
Perfect Attendance

**Eric Whitsel**

Honors  
Outstanding Attendance



**Key:**

Distinguished Honors-4.0 GPA & 90% Attendance

Honors-3.5-3.99% GPA & 90% Attendance

Perfect Attendance-100% Attendance

Outstanding Attendance-90-99% Attendance

## Ask the Computer Expert

By George Vujasin, Network Administrator



Dear Computer Expert,

With the cold and flu season here, is there anything I can do to clean my keyboard or mouse? Also, what should I do to keep my computer clean in general?

-Keeping Clean

Dear Keeping,

The main thing you want to consider when cleaning any PC component is keeping things dry. Even though the keyboard does not have a high amount of electric current going through it, there is enough to cause concern when dealing with moisture. With the cold and flu season upon us,

there is a legitimate concern with keeping the keyboard and mouse as germ-free as possible. Most sources like [www.cdc.gov](http://www.cdc.gov) and [www.flu.gov](http://www.flu.gov) will advise that the common cold and flu viruses can live on plastic surfaces for only 24 to 48 hours.

While that information is encouraging, it is not a bad idea to wipe down your keyboard or mouse. Any standard household cleaner that disinfects is useable. The key to using any type of cleaner in this situation is to remember to not get the equipment wet. It is best to use a soft, lint-free cloth, and spray the cleaner onto the cloth rather than onto the keyboard directly. Gently wipe across the keyboard or mouse. There is no need to soak either piece. The cleaner and the action should help considerably. Frequent hand-washing is also a very good idea, but we've all been told that one already!

Keeping the rest of your PC clean is not very difficult either. It is a good idea to shut down and open up the case at least once a year, more often if you live in a very dusty environment or have a lot of pets. Use compressed air (or canned air, as it is commonly called) to blow out any dust on the motherboard or components. The main thing to remember here is to keep the can

upright. Only air should blow out of the can. This will help keep the inside of the computer free of dust and will allow the machine to run cooler.

Cleaning a monitor is also very simple. For most monitors, a soft, dry, lint-free cloth should take care of any dust that is on the monitor surface. Swiffer cleaning cloths are very good for this purpose. In the most extreme cases, you may need a cleaning solution to take fingerprints off of the monitor. Make sure that you use a cleaner designed for electronic equipment, not a household glass cleaner. The directions for this type of cleaner will also tell you to apply the cleaner to the cloth, and not to the monitor directly.



## Birthday Watch

The following students are celebrating December birthdays:

Nate Givler – December 1st  
 Sheri Conn – December 10th  
 Martika Taylor – December 12th  
 Roslyn Pridgen – December 13th  
 Wendy Foltz – December 14th  
 Colleen McCarthy – December 15th  
 Tobey Rollman – December 18th  
 Jessica Heckenluber – December 21st  
 Jody Mecca – December 23rd

Eric Whitsel – December 24th  
 LaKeisha Burnett – December 25th  
 A'shlei Andujar – December 27th  
 Nina Rumbaugh – December 28th  
 Victoria Moreta – December 30th  
 Darrell Saul – December 30th  
 Jackee Palm – December 31st

**Happy Birthday and best wishes to all of you from the students, staff, and faculty of KTI!**

## Placement & Externship Corner

By: Kristen Cahill, Career Placement/Externship Coordinator

### Students Beginning Externship:

**Chris Anderson**

*Dental Assistant Specialist*

**Evelyn Bernal**

*Medical Assistant*

**Dave Campbell**

*Medical Assistant Specialist*

**Jennifer Casey**

*Dental Assistant Specialist*

**Courtney Caudill**

*Dental Assistant Specialist*

**Connie Cornman**

*Medical Assistant Specialist*

**Sean Duncan**

*Culinary Arts Specialist*

**Saadia Gaston**

*Child Care Specialist*

**Tiyenne Greene**

*Paralegal Specialist*

**Caitlin Jacobus**

*Medical Assistant*

**Terri Linn Peace**

*Dental Assistant Specialist*

**Summer Penn**

*Medical Assistant*

**Shirley Rosario**

*Medical Assistant*

**Andrea Shank**

*Medical Assistant Specialist*

**Jamie Slyman**

*Medical Assistant Specialist*

**Rocklyn Spriggs**

*Culinary Arts Specialist*

### Recent Graduates Obtaining Employment:

**Alexandra Buckner – Medical**

*Associated Cardiologists*

**RaeAnn Jacobs – Dental**

*Hamilton Health Center*

**Marcela Kurtz-Acosta – Culinary**

*Hollywood Casino*

**Richard Sieger – Culinary**

*Hollywood Casino*

**Rhoda Sims – Child Care**

*Premiere Learning Center*

## Recipe of the Month: Heavenly Pineapple Pie

By: Jody Mecca, Culinary Arts student



### Ingredients:

1 cup heavy cream  
 1 20-oz. can crushed pineapple in heavy syrup  
 1 8-oz. pkg. cream cheese, softened  
 1 3 ¼ oz. or 4-serving size pkg. instant vanilla pudding  
 1 8-inch ready-to-use no bake crumb pie crust

### Servings: 6

### Directions:

1. Whip the cream in a small bowl. Refrigerate.
2. Drain the pineapple, reserving the juice.
3. Beat together the cream cheese, reserved pineapple juice and instant vanilla pudding in a medium-size bowl until smooth.
4. Gently fold the crushed pineapple and the whipped cream into the pudding mixture.
5. Spoon into the pie crust.
6. Place in the freezer until hardened, for at least 8 hours or overnight.
7. Remove from the freezer 1 hour before serving.



# HOLIDAY DINNER RECIPES



By: Jody Mecca, Culinary Arts student

## Maple-Glazed Ham

**Servings: 8, plus leftovers**

**Cooking time: 3 hrs, 30 min.**

### Ingredients:

- 1 whole, fully cooked, about 14 lbs, bone-in ham
- ½ tsp. ground cloves
- 1 12 oz. can ginger ale
- 1 1-lb. can cranberry jelly
- ½ cup maple or pancake syrup
- 1 1-lb. can fruits for salad, drained
- 2 handfuls green grapes
- Garnish with Pineapple doughnuts (recipe follows)
- To taste salt and pepper
- 1 cup raisins
- 2 tbsp. White Port wine

### Directions:

1. Preheat oven to 350 degrees
2. Trim the excess fat from ham and score the remaining fat in a diamond pattern.
3. Rub the ham with the ground cloves. Place, fat-side up, in a shallow roasting pan and pour the ginger ale over the ham.
4. Roast at 350 degrees for 3 hrs, basting often with the ginger ale.
5. Heat the cranberry jelly in a small saucepan, stir in the maple or pancake syrup and heat to bubbling.
6. Brush some of the glaze on the ham.
7. Roast 20 minutes, basting the ham several times.
8. Arrange the fruits for salad and the green grapes in a decorative pattern on the ham, then brush with the remaining glaze.
9. Roast for 10 minutes longer, or until richly glazed.
10. Place the ham on a heated platter and garnish the platter with the Pineapple doughnuts.
11. Pour the fat from the roasting pan, stir 1 cup of water into the pan, bringing to a boil.
12. Lower the heat, simmer, stirring up all baked-on juices, until thickened.
13. Taste with salt and pepper.
14. Add the raisins and the wine
15. Pour the sauce into a heated sauceboat.

## Pineapple Doughnuts (to garnish ham)

**Cooking time: 30 minutes**

### Ingredients:

- 1 20-oz. can sliced pineapple in heavy syrup, drained
- 1 17-oz. pkg. frozen puff pastry
- Granulated sugar
- Pumpkin Pie Spice
- 1 egg, lightly beaten

### Directions:

1. 3 to 4 hrs before serving time, place 8 of the pineapple slices on paper towels and let drain 30 mins
2. Thaw the puff pastry, following the pkg. directions. Cut each sheet into 4 squares, roll out each square 1-inch longer and 1-inch wider on a lightly floured pastry cloth or board.
3. Sprinkle the pineapple with the sugar and pumpkin pie spice, place each slice on a pastry square.
4. Wrap the pastry around the pineapple, pinching the ends to seal and trimming excess dough from the bottom.
5. Turn right-side up and shape the pastry around the pineapple to form a circle.
6. Carefully cut an "X" in the middle with a sharp paring knife, enlarge to neaten the hole with your finger.
7. Place the doughnuts on a medium-sized ungreased cookie sheet and freeze until 30 mins before serving.
8. Preheat the oven to 425 degrees.
9. Brush the doughnuts with the beaten egg.
10. Bake at 425 degrees for 30 mins, or until puffed and golden brown.
11. Serve warm as a garnish around the ham.



# HOLIDAY WORD SEARCH



Acclaim Images.com



Y L I M A F C L C L S M S M E T  
 U L Z R A C H A N A M W O N S T  
 S H B E A N R C M S E L E E A I  
 I G A B S O I I A O L W H F S H  
 A I I M L I S N N E Y R A C E N  
 A E E E L T T G G E C A K J G S  
 S L R C L A M N A T O P K I L O  
 B S N E M R A R P G O P U N W N  
 L K T D C B S T O C K I N G S A  
 H O M I Y E L C I C I N A L O G  
 E A E T V L T Y U E E G H E L G  
 A P R E S E N T S N S P I B T C  
 T A H O T C H O C O L A T E O N  
 P K W A N Z A A T A A P N L L I  
 N P K T G E I N L O I E D L E N  
 S T H G I L M Y O L B R W S G J

Christmas

jingle bells

Hanukkah

mistletoe

snowman

wrapping paper

sleigh

icicle

lights

Santa

carolers

December

cold

Menorah

Kwanzaa

family

New Year's Eve

presents

angel

celebration

party

hot chocolate

Stockings

cookies



©M.H.

## CALENDAR OF EVENTS

### December

**12/3:** Birthday Celebrations

12 PM & 7 PM

**12/9:** Day Honors – 12 PM

**12/10:** Holiday Party

12 PM & 7 PM

Evening Round Table – 7 PM

**12/11:** Meet And Greet;

Day Round Table – 1 PM

**12/24:** Christmas Eve– School Closed

**12/25:** Christmas – School Closed

**12/28:** No Classes

**12/29:** No Classes

**12/30:** No Classes

**12/31:** New Year's Eve – No Classes

### January

**1/1:** New Year's Day – School Closed

**1/7:** Birthday Celebrations

12 PM & 7 PM

**1/8:** New Day Start

**1/12:** End Day Module

**1/13:** New Day Module

**1/14:** Day Round Table – 1 PM

**1/15:** Evening Round Table – 7 PM

**1/18:** New Evening Start

**1/20:** Day Honors – 12 PM

**1/21:** End Evening Module

**1/25:** New Evening Module

**1/28:** Evening Honors &

Evening Round Table – 7 PM

**1/29:** Day Round Table – 1 PM



# December 2009

Sun	Mon	Tue	Wed	Thu	Fri	Sat
		1	2	3 	4	5
6	7	8	9 Day Honors 12 PM	10 Holiday Party Round Table 7 PM	11 Meet & Greet Round Table 1 PM	12
13	14	15	16	17	18	19
20	21	22	23	24 School Closed	25 	26
27	28 No Classes	29 No Classes	30 No Classes	31 		

# January 2010

Sun	Mon	Tue	Wed	Thu	Fri	Sat
					1 	2
3	4	5	6	7 	8 New Day Start	9
10	11	12 End Day Module	13 New Day Module	14 Round Table 7 PM	15 Round Table 1 PM	16
17	18 New Evening Start	19	20 Day Honors 12 PM	21 End Evening Module	22	23
24	25 New Evening Module	26	27	28 Evening Honors & Round Table 7 PM	29 Round Table 1 PM	30
31						